



RX MARINE INTERNATIONAL

Total Solution Total Protection

AN ISO CERTIFIED COMPANY



B Solve

Part/Order no:

RXSOL-19-1204-25

RXSOL-19-1204-210

Packing

25 Ltr

210 Ltr

Product Description:

RXSOL-19-1204 A fast-evaporating glycol ether with an excellent balance of hydrophilic and hydrophobic character; excellent active solvency and coupling properties. It is a very versatile solvent product with a good balance of many different properties. With a nearly equal balance of hydrophobic and hydrophilic character, RXSOL-19-1204-210 provides excellent performance in coatings, cleaners, and many other types of products. It is one of our fastest selling products which is frequently used for Double Bottom Tank Cleaning Purpose. RXSOL-19-1204-210 is compatible with a wide range of resin types, and it also offers 100% water solubility.

Application :

- Active solvent for solvent-based coatings.
- Coalescent for industrial water-based coatings.
- Coupling agent for architectural water-borne coatings.
- Coupling agent and solvent in household and industrial cleaners, rust removers, hard surface cleaners, and disinfectants.
- Primary solvent in solvent-based silk screen printing inks.
- Coupling agent for resins and dyes in water-based printing inks.

Dose:

Refer to technical datasheet.

Spraying:

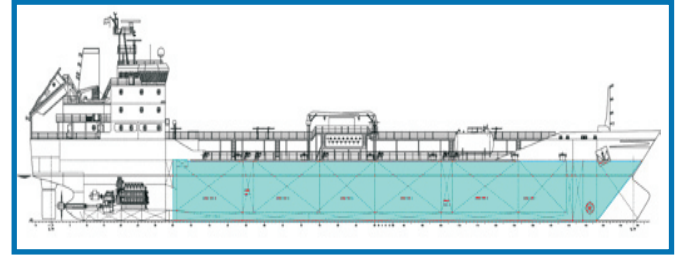
The tank should be sprayed with BSOLV, and then left for 45 minutes. After 45 minutes the tank should be butterworthed warm 50-60 °C for 30 minutes, followed by a 4 hour hot wash 80 – 85 °C, after which fresh water rinse and dry the tank. All safety precautions must be taken whenever handling this product.

Re-Circulation:

Sufficient BSOLV should be filled into the tank so that the cargo pump and butterworth machines function properly. Circulations should be carried out for at least 4 and ideally 6 hours and all areas of the tanks must be rinsed. The tank MUST be at least cleaned to a good Water White standard and must be dry, before filling the BSOLV. If another tank is to be circulated, then the product can be directly transferred. If not, it can be returned to drums for further use at a later date. Following the circulations, the same washing procedure is carried out as outlined above in the spraying section.

Features :

- Powerful solvency.
- Coupling ability.
- Coalescing ability.
- Moderate evaporation rate.
- High dilution ratio.
- Wide range of applications.



WEBSITE LINK

Membership Plan Our main goal is to provide the Best services To our valued customers. ur services are built around providing you with best quality products at very low cost. We believe that this will help you to maximize the benefits.



Membership Plan	Yellow	SILVER	GOLD
Discount	25%	30%	35%
Amount	15,000	45,000	60,000

Membership Plan Benefits

1. Get High Quality Product into Low price.
2. All amount paid for the membership plan to be refundable.
3. Same price in India ,UAE, Singapore,Bahrain.
4. Members are Offered to supply the RXSOL Brand on behalf of Rx Marine International to Know more.
visit our web site :<http://rxmarine.com> membership-plan.